

Tritanium

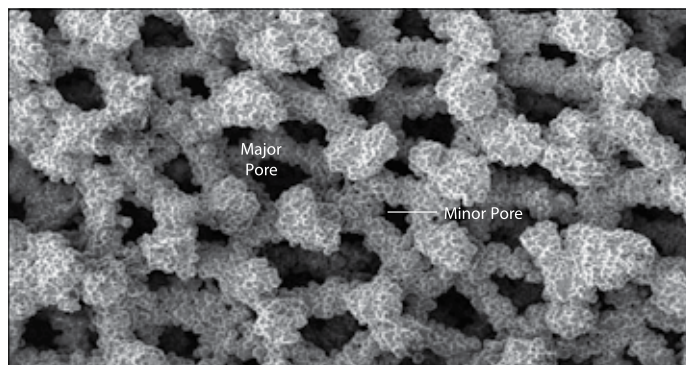
Features & Benefits

Tritanium Acetabular Shells

Tritanium Advanced Fixation Technology, developed from commercially pure Titanium (CPTi)-a biologically compatible material, is applied to Stryker's Multi-Hole shell to aid in revision THA.

Key Features

- Commercially pure titanium structure on titanium alloy shell
- Major pore size (650 microns, ± 100)
- Minor pore size (250 microns, ± 50)
- Multiple screw hole pattern, superior and inferior clusters



Benefits

- Highly porous ingrowth surface, which closely resembles the structure of trabecular bone
- Designed for revision surgery, with multiple screw holes to achieve bone fixation and initial stability